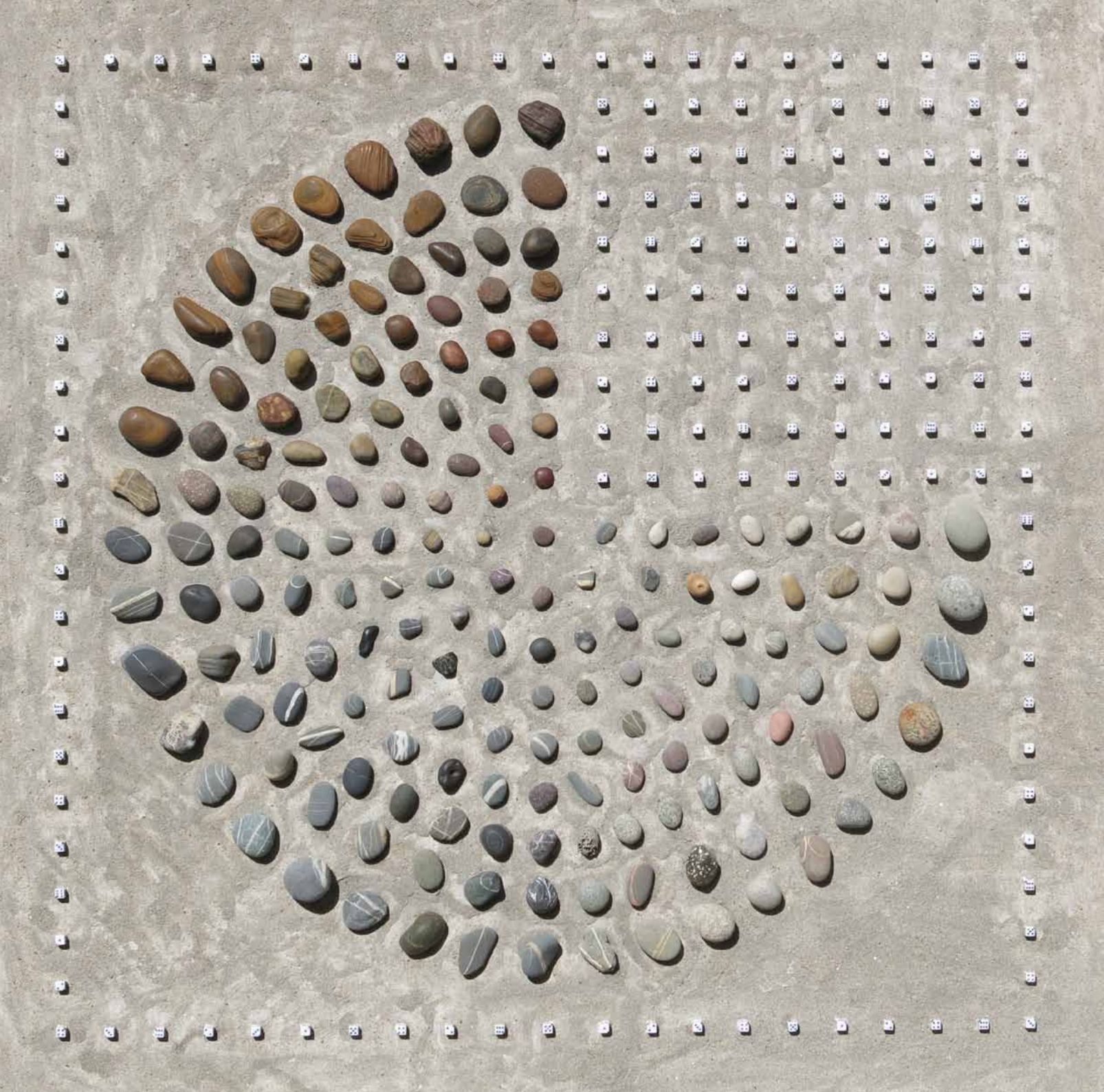


smac  
art gallery

# BIG DRUID IN HIS CUBICLE

07.11.13  
07.12.13



Willem Boshoff is real and present as the Druid in:

# BIG DRUID IN HIS CUBICLE

Willem Boshoff's lifestyle has always been to a large extent similar to that of a druid - spartan, meditative, and immersed in study, nature, the arts and the universe. The Big Druid as Boshoff's second-self embraces the abstract concept of the artist/druid as one being and is prevalent in his work, synonymous with the artist's persona. Unconsciously and intuitively within his behaviour and his immersion in nature and languages, Boshoff's practice is entranced by the act of seeing things anew. As the artist states, "it is by truly *seeing* that you can think intuitively...the words for this knowing [are], *Gnosis or Gnostic*." This *seeing* develops and encourages gnosis as Boshoff continues to become the Druid, a notion akin to the synergy of the 'marrying of the sciences,' which as an artist he strives to encapsulate in his production and exploration within his artworks.

From 2 November to 7 December 2013, Willem Boshoff will present his work and experiences in person as the Big Druid at SMAC Art Gallery in Cape Town. The gallery will function as the Druid's cubicle where he will be residing and working on creative strategies and writing dictionaries.

Boshoff also presents a new body of work. He combines his fascination with words and language with an astute awareness of the natural world and socio-political discourses. Working in a number of modes and media, from monumental stone and wood works, to ephemeral works from sand, to 'concrete poetry' (his own dictionaries and taxonomies), it is the world's texts and textures that inspire Boshoff.

Boshoff's almost obsessive ethic and painstaking approach, in conjunction with a convergence of craft and concept has garnered his art extensive local and international recognition. Working with Southern Africa's textures, Boshoff handles sand, stone and especially wood with impressive skill and intimate intricacy.

---

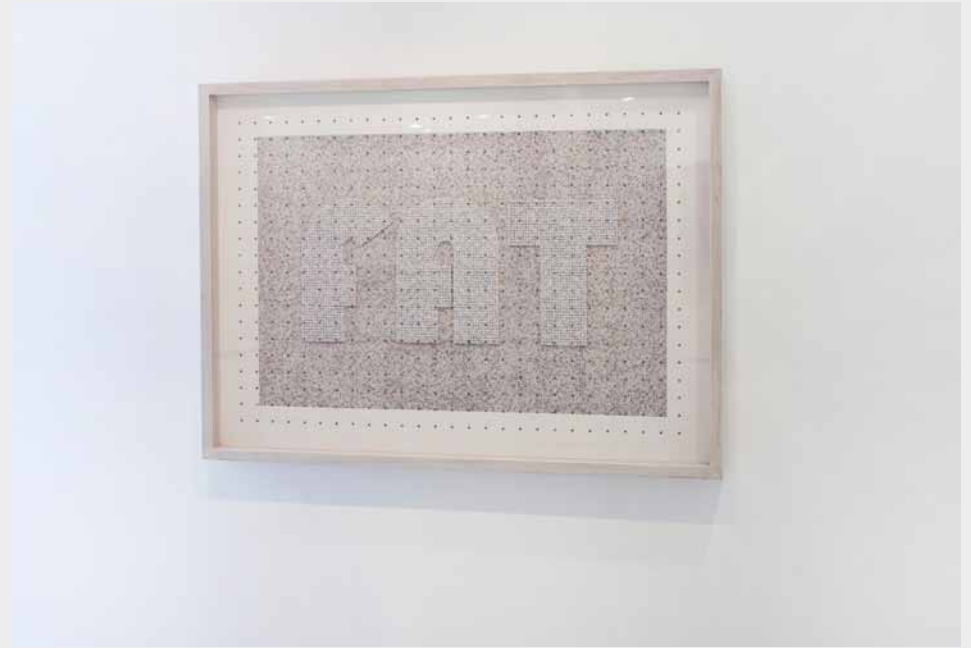
Willem Boshoff has had a prolific art career spanning over 30 years. In 2008 he received an honorary doctorate from the University of Johannesburg. Having recently returned from overseas where he presented a talk at the Tate Modern in London, Boshoff's reputation has established itself as one of international standing. Boshoff represented South Africa at the São Paulo Biennale in 1996 and in 1997 he was the winner of the FNB Vita Award for Art. In 1998 he won the Ludwig Giess Preis, awarded by the LETTER Stiftung, Cologne, Germany and in 1999 he received the Gauteng Arts, Culture and Heritage Award for Visual Art. In 2001 he was the recipient of an honorary medal for Visual Arts and Sculpture from the South African Academy for Science and Art.





*Homage to Kurt Schwitters*  
2013  
Wood and Various Sands  
250 x 128.5 cm

*Noli Turbare Circulos Meos – Detail I*  
2011  
Belfast Black Granite  
138 x 68 x 21 cm  
Ed of 1





*Blind Fish XI*  
2011  
Jacaranda and Imbuia Wood, Braille Text in Escutcheon Pins  
220 x 15 x 25 cm

Braille text on reads:  
"To talk much and to arrive nowhere is like climbing  
a tree to catch a fish." – Chinese Proverb



*Prehistoric Dice III*  
2013  
Belfast Black Granite  
126 x 100 x 40 cm  
Ed 3 of 3

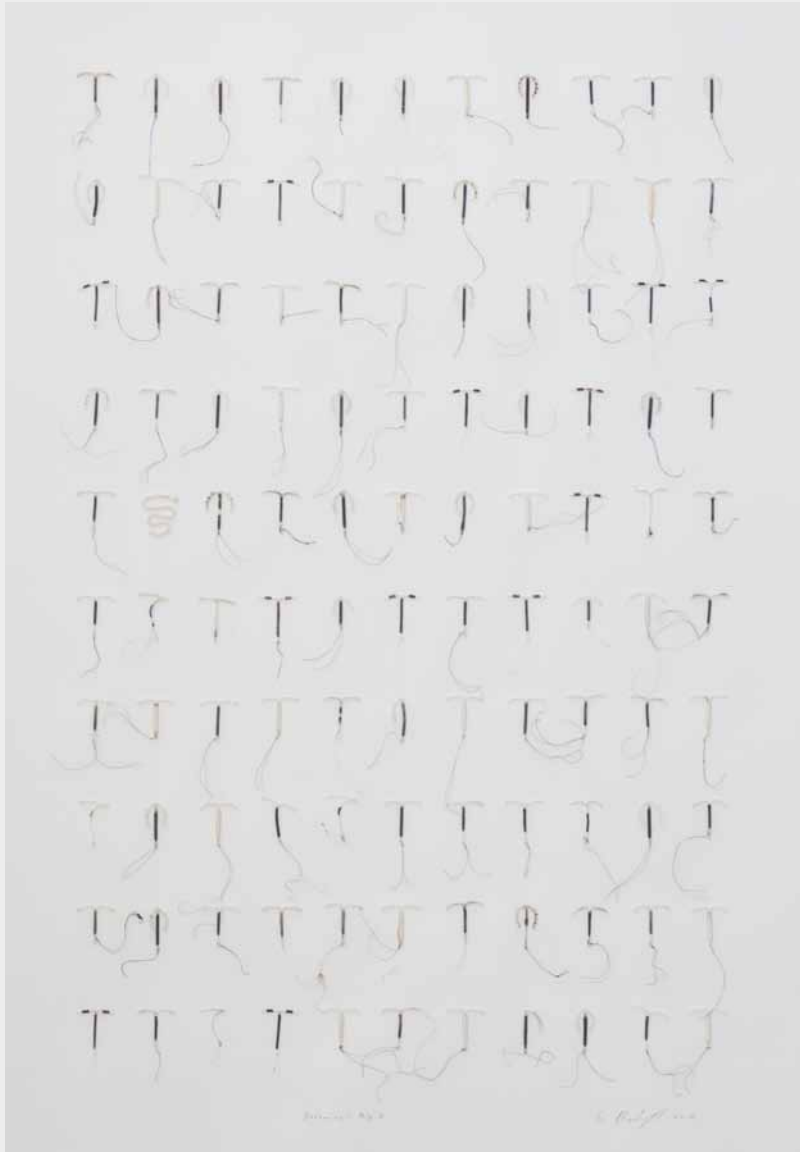


*Inklings*

2013

Wooden Cutting Block and Palm  
(*Washingtonia robusta*) Cuttings

122.5 x 165.5 cm



*Alchemical Sigils*  
2012  
Intrauterine Devices  
100 x 70 cm

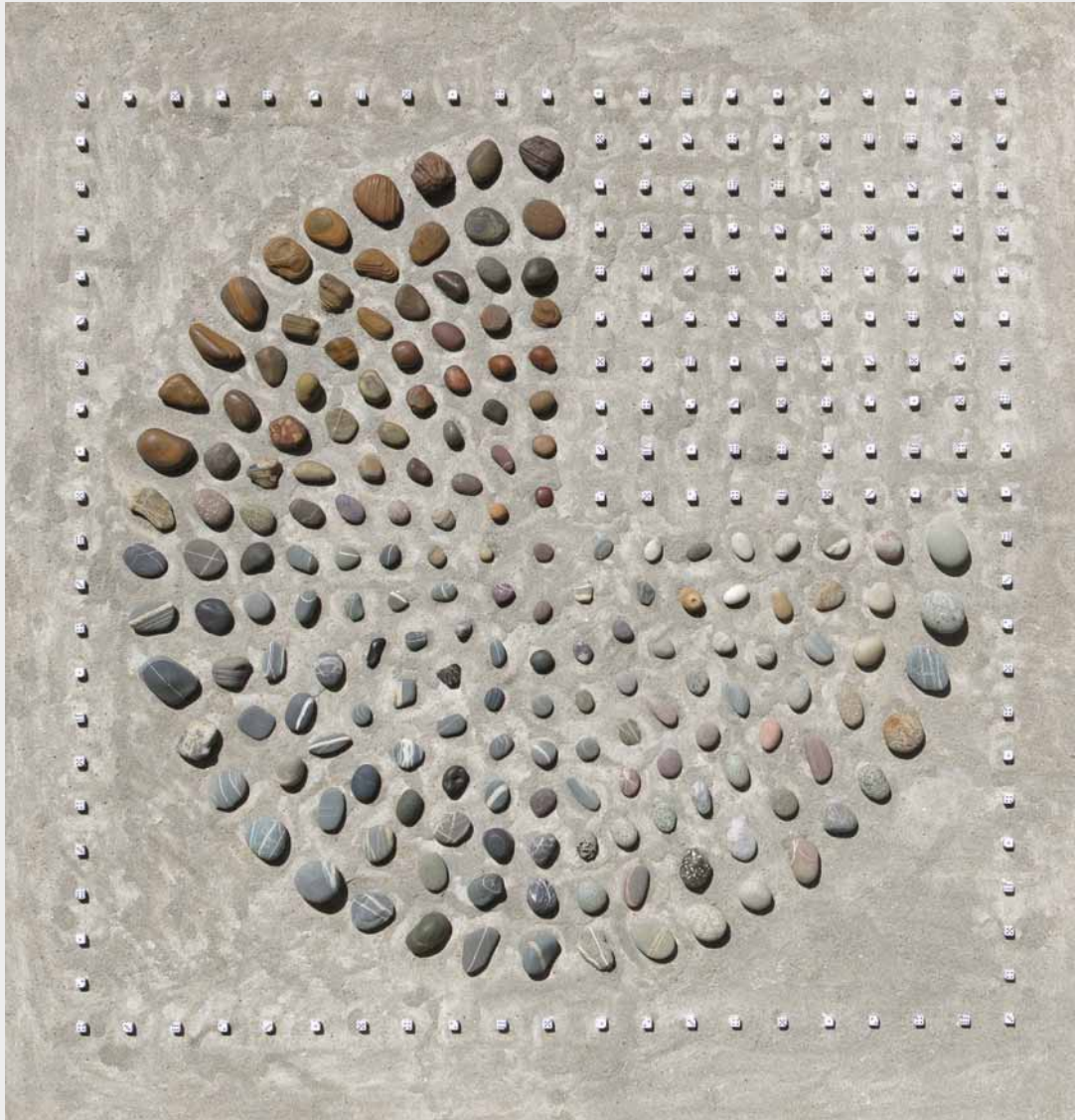


*Willem Boshoff: Big Druid in His Cubicle* | Installation View



Willem Boshoff: *Big Druid in His Cubicle* | Installation View



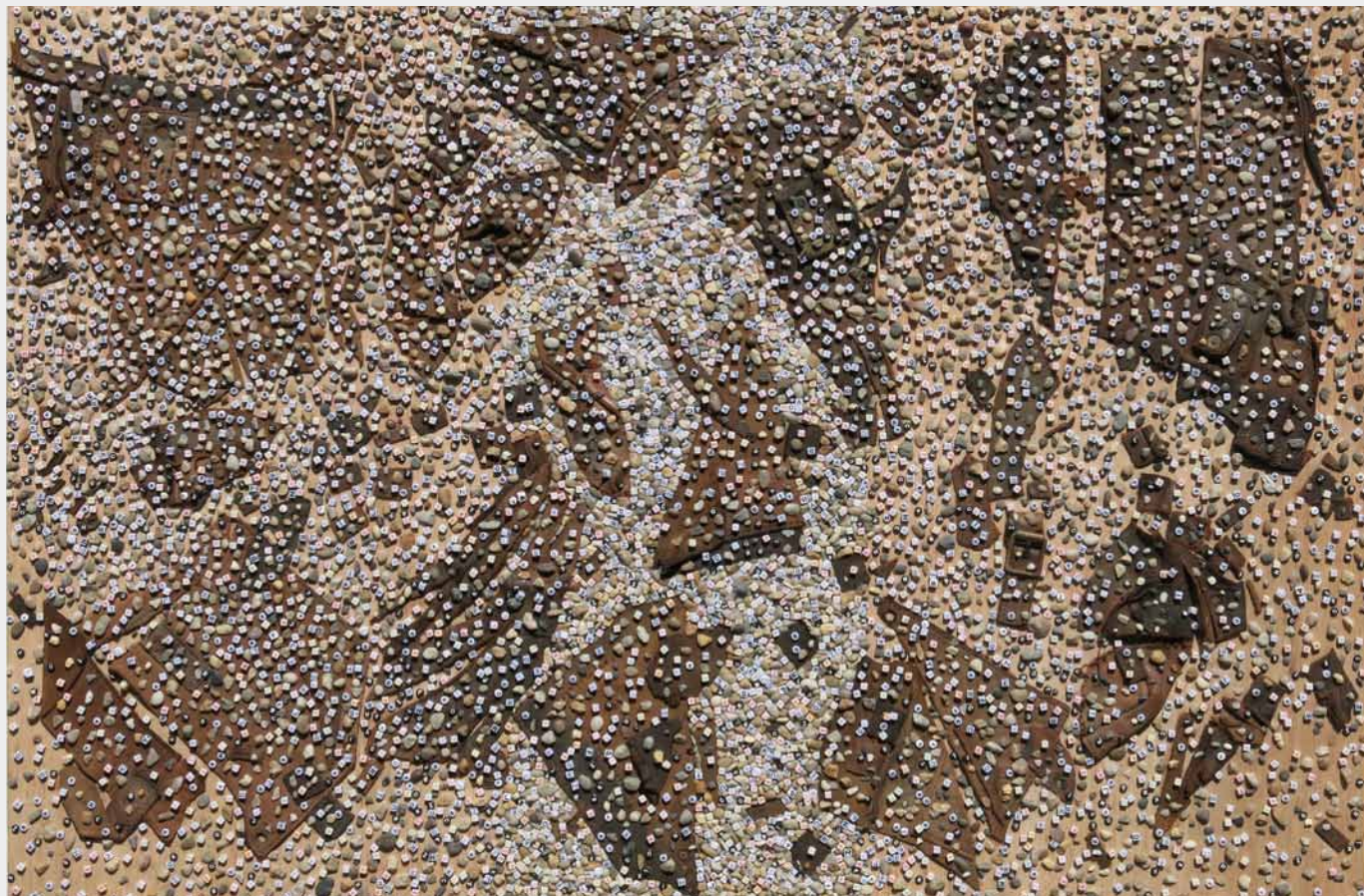


*Druid's Keyboard II*  
2013  
Dice, Pebbles and Sand  
150 x 163 cm



Willem Boshoff: *Big Druid in His Cubicle* | Installation View





*School*  
2013  
Stones, Old Leather School Bag and Dice  
106 x 147 cm



*Noli Turbare Circulos Meos*  
2009  
Belfast Black Granite  
140 (h) x 100 (w) x 4 (d) cm each  
Ed 3 of 5







*Nuclear / Unclear*  
2013  
Polished Stainless Steel  
66 x 174 x 28 cm



*Muddle*  
2011  
Handmade Milkweed Paper  
110 x 230 cm



*Snap*  
2011  
Handmade Milkweed Paper  
110 x 230 cm



*Bifistular*

2008

Kiaat Wood (*Pterocarpus angolensis*) and Braille Text in Escutcheon Pins

70 x 25 x 11 cm



*Boustrophedon*

2008

Kiaat Wood (*Pterocarpus angolensis*) and Braille Text in Escutcheon Pins

54 x 37 x 11 cm



*Planets of Echinus*

2008

Zebrano Wood (*Microberlinia brazzavillensis leguminosae*) and Braille Text in Escutcheon Pins

50 cm diameter



*Seven Pillars of Justice*

1997

Zimbabwe Teak (*Baikiaea plurijuga*) and Lendwood (*Combretum imberbe*),

Braille Text in Escutcheon Pins

22 x 15 x 25 cm

AP

Braille text reads:

1. *ARS BONI ET AEQUI* (The art of the good and equitable)
2. *SUUM CUIQUE TRIBURE* (To give everyone his due)
3. *PACTA SUNT SERVANDA* (Contracts shall be performed)
4. *BONA FIDES* (Good faith)
5. *AUDI ALTERAM PARTEM* (To listen to the other side)
6. *SUMMUM IUS SUMMA INIURIA* (Perfect law is the highest injustice)
7. *NEMO IUDEX IN SUA CAUSA* (No-one shall be a judge in his own defence)



*Wooden Shift*  
1985  
Stinkwood (*Ocotea bullata*)  
Sizes Variable  
AP



## **THE DRUID IN HIS CUBICLE**

---



Willem Boshoff: *Big Druid in His Cubicle* | Installation View



Willem Boshoff: *Big Druid in His Cubicle* | Installation View



Willem Boshoff: *Big Druid in His Cubicle* | Installation View

